

Update Canada!!



Attention Program Change!!!!

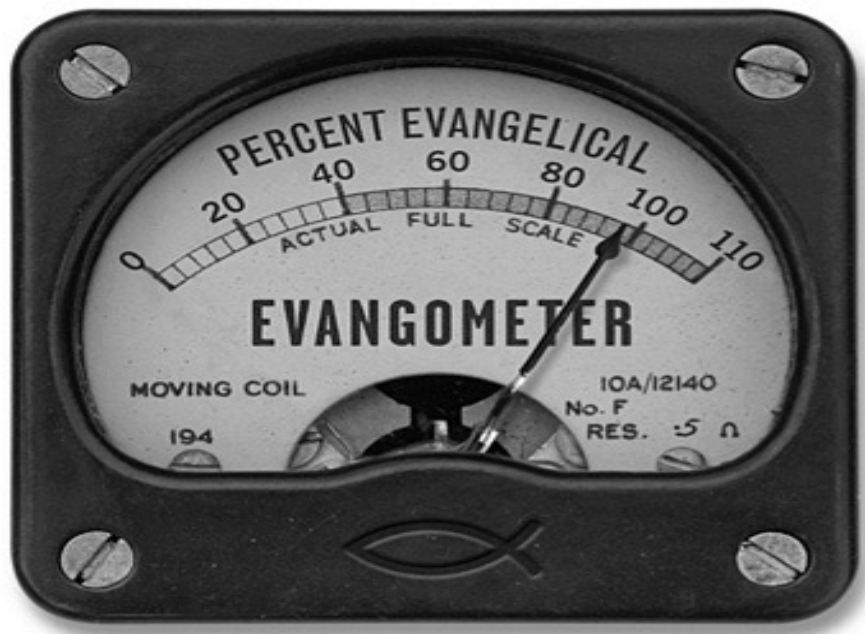
- Page 16
- Bottom of Page
- Incorrect Credentials

Stuart Reynolds, MD, FCCP
Ass Professor



Confessions

- Medical Director of CCRT program in Ontario, Canada



Factoids Canada

- The beaver attained official status as an emblem of Canada March 24, 1975 .
- The maple leaf began to serve as a Canadian symbol as early as 1700 .
- The colour of the maple leaves on the arms of Canada was changed from green to red in 1957.



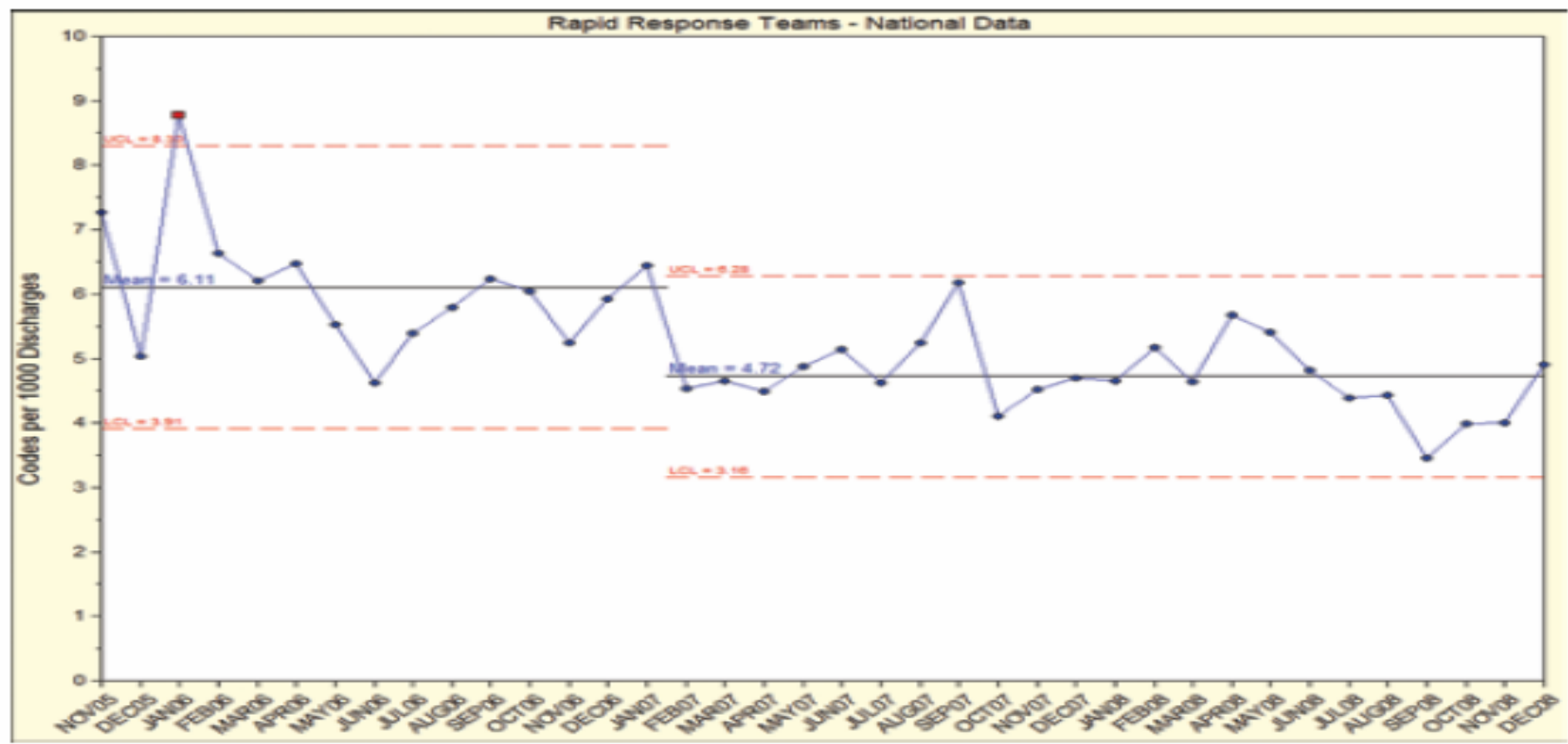
RRS's across Canada



safer healthcare now!



Rapid Response Teams decrease hospital codes:



Data from *Safer Healthcare Now!* Rapid Response Teams (RRT) shows the average rate of codes outside an ICU has decreased from 6.11 to 4.72 codes per 1000 patient discharges within 15-months of the introduction of the *Safer Healthcare Now!* Rapid Response Team initiative and contributing data submission.

Province of Ontario



CCRT Update Ontario

- 27 Adult CCRT's
- 4 Pediatric CCRT's
- 5 Completed Pilot Projects for Alternative Models
 - CCRT Lite (1)
 - Hospitalists (1)
 - Nurse Education Model (1)

MANDATE FROM MINISTRY OF HEALTH

- I. A systematic approach to the early identification and resuscitation of in-patients at risk of deterioration.**
- II. A way to provide Comprehensive Critical Care Services**
- III. A way to provide critical care education**
- IV. A way to Support and Coordinate the care of patients**

Focus from 2006 - 2008

- **Diffusion of the Innovation – 3 phased approach**
 - Getting the teams utilized and accepted
 - Consult rates:
 - Beginning of Phase III – 34 consults per 1000 admissions
 - Now varies between 50 – 90 Consults per 1000 admissions
- **Focus has been on Afferent and Efferent Limb Development and Acceptance**

Phase IV - 2009

- **Administrative Limb Development**
- **Data Analysis and Feedback**
 - **Review of Outcome measures**
 - **Data Validity Assessment**
- **Performance Improvement**
- **Expansion of Services**
- **Return on Investment Analysis**

CCIS Ontario's Critical Care
Information System

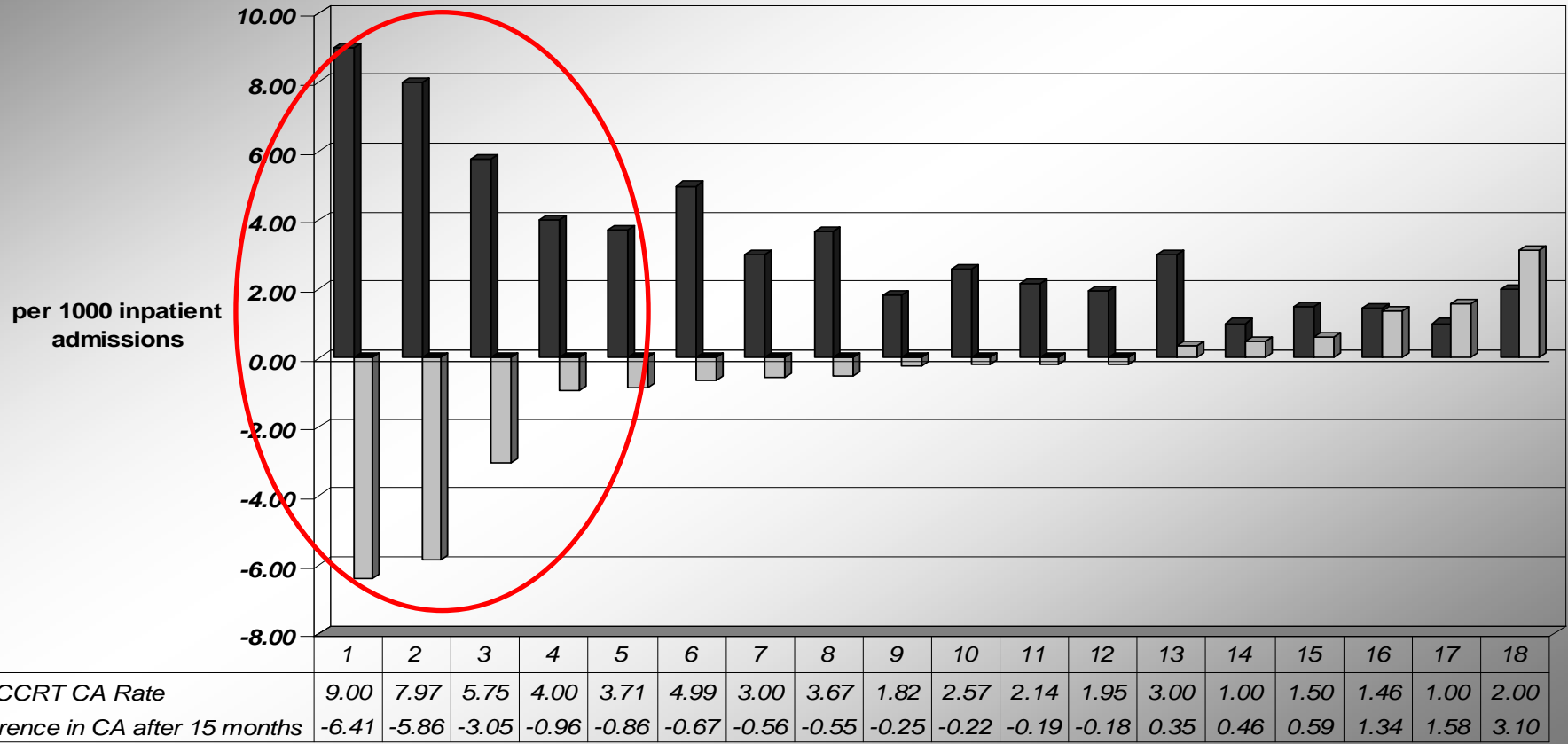
Some Results

**Business adage – you get 80% Business
comes from 20% Customers**

Same with performance measures in RRS.

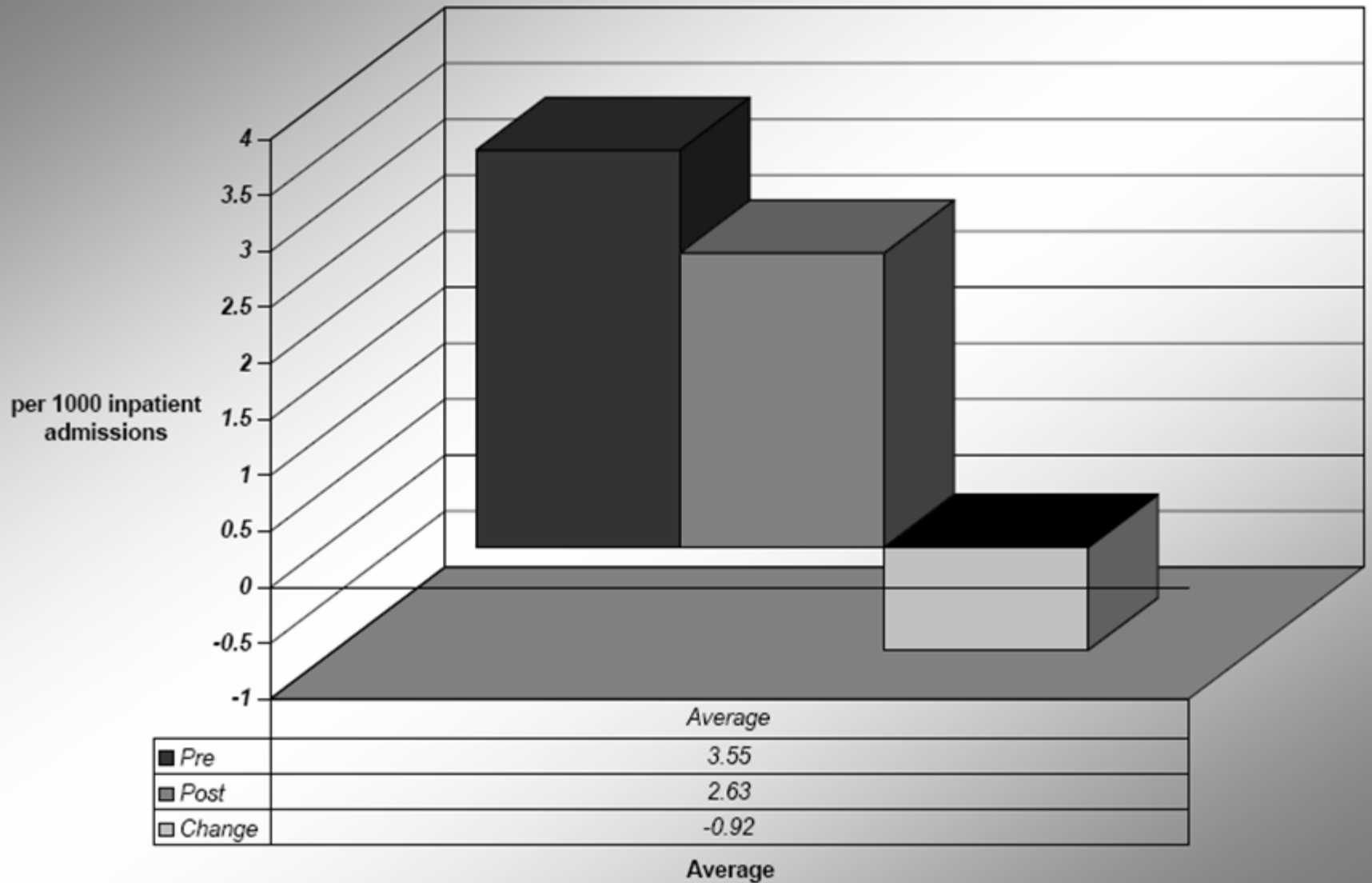
**Bulk of improvement across a system
comes from specific hospitals**

Relationship between Change in Cardiac Arrests and Baseline Cardiac Arrest Rate



■ Pre-CCRT CA Rate	9.00	7.97	5.75	4.00	3.71	4.99	3.00	3.67	1.82	2.57	2.14	1.95	3.00	1.00	1.50	1.46	1.00	2.00
□ Difference in CA after 15 months	-6.41	-5.86	-3.05	-0.96	-0.86	-0.67	-0.56	-0.55	-0.25	-0.22	-0.19	-0.18	0.35	0.46	0.59	1.34	1.58	3.10

Cardiac Arrest Rate Pre - Post RRS





In-hospital cardiac arrest: survival depends mainly on the effectiveness of the emergency response

Claudio Sandroni^{a,*}, Giorgia Ferro^a, Susanna Santangelo^a,
Francesca Tortora^a, Lorenza Mistura^b, Fabio Cavallaro^a,
Anselmo Caricato^a, Massimo Antonelli^a

^a Department of Anaesthesiology and Intensive Care, Catholic University School of Medicine, Largo Gemelli 8, 00168 Rome, Italy

^b Department of Statistics, INRAN Research Institute, Via Ardeatina 546, 00178 Rome, Italy

Received 20 March 2003; received in revised form 15 March 2004; accepted 23 March 2004

- 84% - ROSC to ICU
- 32% alive at one month in hospital
- 18 % survival at one year with good recovery or moderate disability

Extrapolation

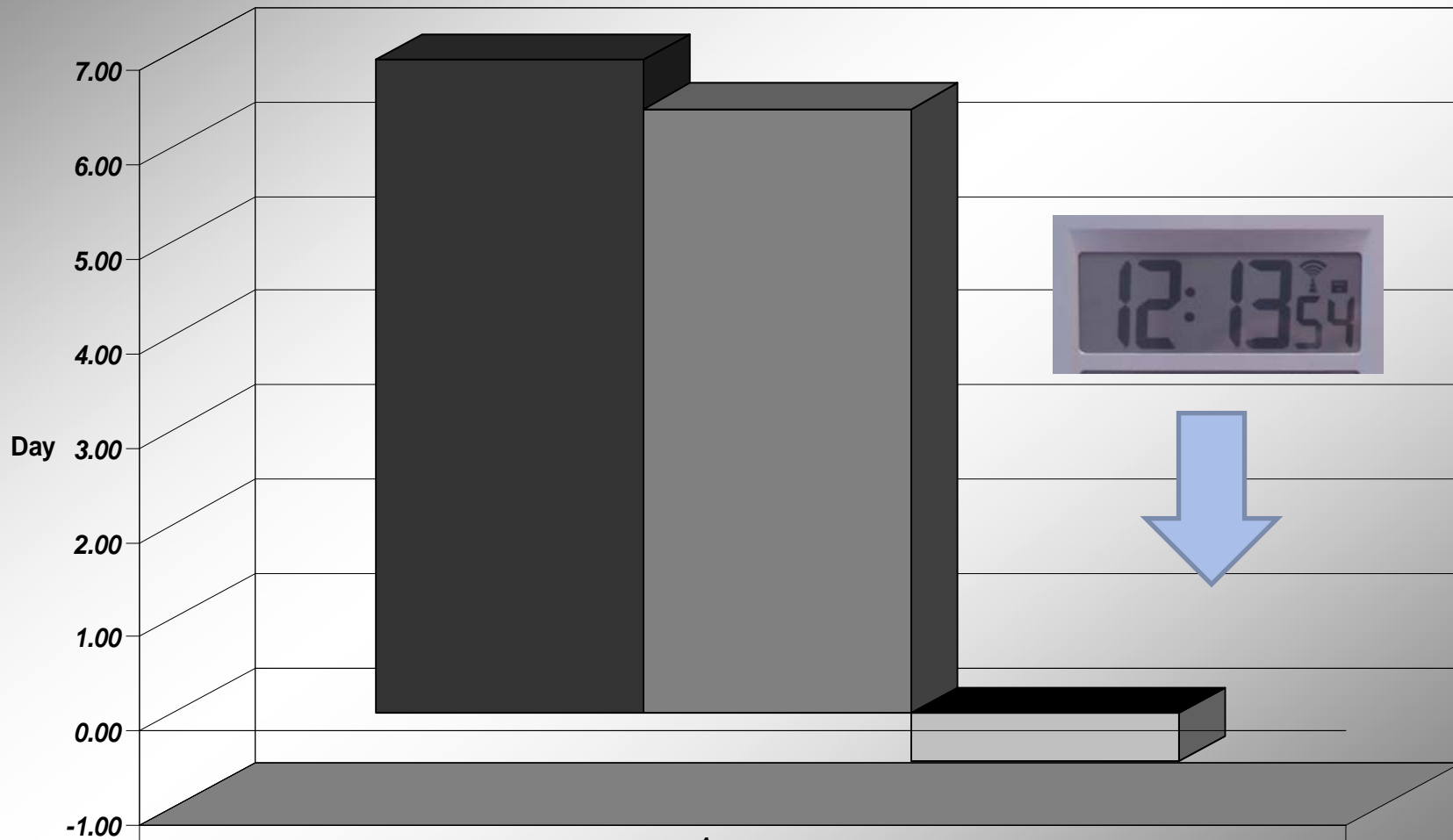
- 347 fewer deaths
- 344 fewer ICU admissions
- 3930 fewer patient days

Length of Stay

Gathered Data on all inpatients admitted to an ICU.

Looked at those admitted via CCRT and those by “other” means – traditional ICU consult

Difference in ICU LOS those admitted via CCRT and all admissions to ICU



■ All Patients ICU LOS
■ CCRT Patients ICU LOS
■ Difference

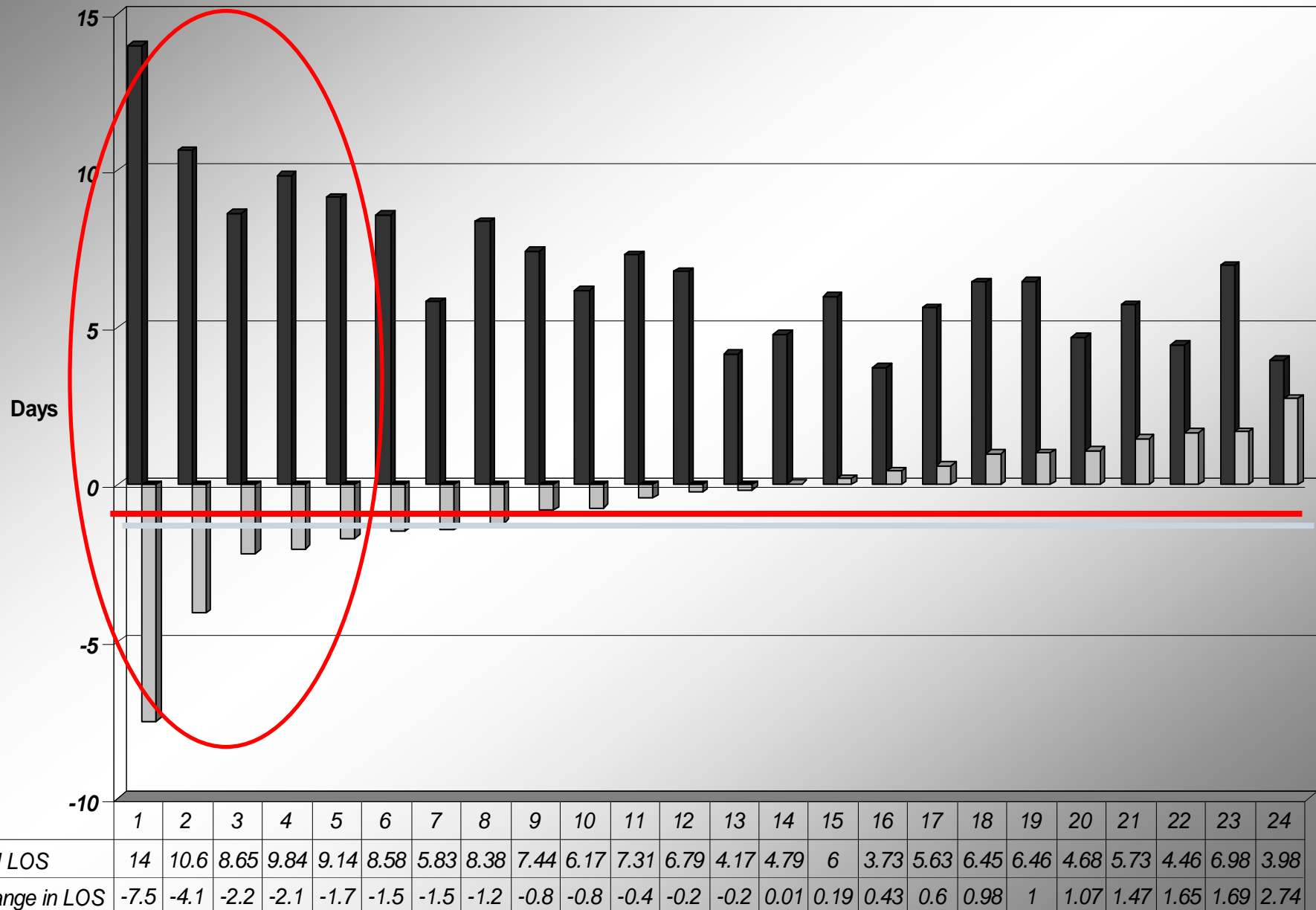
Average

6.91

6.39

-0.52

ICU LOS and Difference in ICU LOS those admitted via CCRT





INSPIRATION

GENIUS IS ONE PERCENT INSPIRATION AND 99 PERCENT PERSPIRATION,
WHICH IS WHY ENGINEERS SOMETIMES SMELL REALLY BAD.



TRADITION

JUST BECAUSE YOU'VE ALWAYS DONE IT THAT WAY
DOESN'T MEAN IT'S NOT INCREDIBLY STUPID.

Thanks

- Acknowledgements
 - RN's, RRT's, MD's within the CCRT's